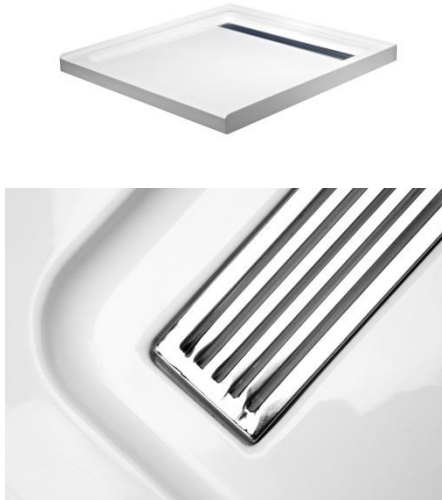


Modern Shower Base



Installation Instructions

- White Acrylic Fibreglass
- Integrated Chrome Plated Stainless Steel Channel
- Flat Entry
- Raised Lip on sides & back



Modern Shower Base B1
Sizes: 900mm x 900mm Square
I/N: 5130875

Modern Shower Base B2
Size: 1200mm x 900mm Rectangle
I/N: 5130876

Modern Shower Base B3
Size: 1000mm x 1000mm Corner
I/N: 5130877

Modern Shower Base B4
Sizes: 820mm x 820mm Square
I/N: 4890590

Modern Shower Base B5
Sizes: 1000mm x 1000mm Square
I/N: 4890591

Modern Shower Base B6
Size: 1500mm x 900mm Rectangle
I/N: 4890592

IMPORTANT TO READ BEFORE INSTALLING

Please inspect this product for damage, manufacturing fault or missing parts prior to commencing the process of installation, no warranty will be applied after installation has begun.

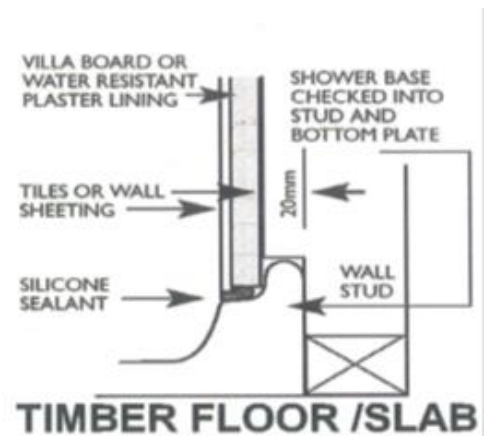
Please refer to the supplied installation instructions to guide you through the installation process. Before you commence installation, refer to the Tools Required List below to execute the installation.

Items included in box

- 50mm Waste Connection
- Stainless Steel Grate
- Acrylic Shower Base

Tools Required – These items are NOT included in box

- Level
- Silicone & Silicone Gun
- Packing Sand (If you choose this option refer Step 2)
- Towel
- Rubber Mallet



STEP 1 – Before you begin

- a. Make sure bottom timber plates of stud wall are checked out to enable plaster/AC sheet to cover external lips. Ensure waste hole is pre-cut into correct position with enough clearance to easily connect trap.
- b. If installing on to timber floor boards, the floor boards or sheet flooring must cover the entire underside of base. Cut hole through floor no greater than 200mm x 200mm.

Note: If doing a renovation please check floor boards for soundness as rotting may have occurred and flooring may need replacing (Not required if installing onto concrete slab).

STEP 2

The shower base is self-supporting, you may choose to install with or without Packing Sand. Please proceed with Step 2 (a) or Step 2 (b) accordingly. **IMPORTANT: Do NOT use cement slurry, the shower base is designed to flex. The use of cement may cause the base to crack and will void your warranty.**

Step 2 (a) Installing with Packing Sand

- a. Lay appropriate amount of packing sand (approx. 50-70mm) over entire area where base is to be installed
- b. Trowel off level
- c. Lay base down
- d. Wiggle base side to side and using a rubber mallet tap down until external edges of base touch floor

Step 2 (b) Installing WITHOUT Packing Sand

- a. Place a large dab of silicone on each cross point of the undercarriage of the shower base
- b. Lay base down
- c. Use a rubber mallet to tap down until external edges of base touch floor

STEP 3

- a. Check levels of base edges to ensure they are level

STEP 5

- a. Seal external edge of base to the floor
- b. Seal plaster/AC sheets around bottom to base once installed

STEP 6

- a. Tile or fix shower walls

Cleaning Hints

Do not use harsh or abrasive cleaners, gritty scouring powders or pads, dry cleaning fluids, window cleaning sprays or ammonia compounds.

Rick McLean's Designer Shower Screens (Aust) Pty Ltd

Trading as Rick McLean's Designer Bathware

WARRANTY**- Measured & Installed Products**

Rick McLean's Designer Bathware will provide a 2 year Service Warranty on installation and componentry of measured & fitted Shower Screens, Mirrors & Sliding Robe Doors. Cracked, smashed or broken Glass, Splashbacks and Mirrors are NOT included. Warranty does not cover glass. Replacement glass is covered by the customer's house & contents insurance policy (if applicable) or at the customer's own expense.

- Supply Only Products

Rick McLean's Designer Bathware will provide a 2 year Warranty on our supply only products. Warranty does not cover glass. Replacement glass is covered by the customer's house & contents insurance policy (if applicable) or at the customer's own expense.

Rick McLean's Designer Bathware will supply a replacement product where faulty manufacture or faulty materials exists, only in accordance with correct installation procedure.

This warranty DOES NOT apply to other defects which may have arisen as a result of; accidental damage, misuse, abuse, maltreatment, wear & tear, incomplete return, abnormal stress or neglect of any kind.

This warranty DOES NOT include REMOVAL AND/OR INSTALLATION COSTS and any other associated expenses incurred, including those costs incurred from third party.

It is the responsibility of the recipient to inspect the product/s once received to ensure no transit damage has occurred, and/or missing parts or manufacturing faults are applicable.

Plumbing and Bathware products must be installed by a licensed plumber. Failure to do so will immediately void warranty.

Failure due to other causes, including the use of other than recommended installation procedures, may also void warranty.

Please ensure that plumbing and bathware products are installed in accordance with local by-laws.

Please ensure glass and fragile products are handled with care. Avoid knocks & shock to all sides of packaging when transporting.

Freestanding Baths are not designed to be installed hard up against bathroom walls. The sides of the baths taper, even if they appear to be straight edged. Installing freestanding baths up against tiled walls or recessing baths into walls and tiling down onto them is at the client's own discretion. This is not in accordance with correct installation procedure and will void warranty.

Sizes, Prices and Stock Availability of products are subject to change without notice.

Warranty does not cover glass.

Broken Glass or missing parts will not be replaced under warranty if the Shower Screen is in the process of being installed.

The safety glass featured in all Shower Screens cannot be cut, trimmed or altered in any way.

Manufactured sizes of Shower Screens, Shower Bases & Baths are nominal. Actual sizes may vary during manufacturing.

- [How to make a claim for Credit or Exchange of Goods for Supply Only Products](#)

Rick McLean's Designer Bathware will credit or exchange goods within 14 working days from time of purchase.

The customer will be deemed to have accepted the goods as being in accordance with its order unless it notifies Rick McLean's Designer Bathware of its claim within 14 days of receipt of the goods.

All returned goods will incur a 25% restocking fee on the total cost of goods.

The following conditions must be met however in order to accept returned goods:

- We have received prior notification by advising our office on 03 9331 6660 or in person
- Original tax invoice must be supplied
- Goods must still be in original condition
- Goods must still be in original packaging
- Customer is responsible for arranging return of goods and all transportation costs involved
- In the circumstance that a credit is issued, we will hold a credit for 30 days

Any goods authorised for return shall be returned at the customer's expense