

Euro Frameless Panels



Installation Instructions

- Frameless
- Reversible
- Chrome Fittings
- 8mm Clear Safety Glass
- Can be installed on shower base or tiled floor



Available to suit the following base size

Screen Height 2000mm

1500x900mm I/N 4890634

Front adjusts 880 - 900mm

Side adjusts from 860 – 880mm

IMPORTANT TO READ BEFORE INSTALLING

Please inspect this product for damage, manufacturing fault or missing parts prior to commencing the process of installation, no warranty will be applied after installation has begun.

Prior to installation, please ensure there are no pipes or cables hidden in the wall where you intend to drill.

All of our Shower Screens must be handled with extreme care as glass is fragile and can shatter if handled incorrectly. Glass is not covered by warranty. You will notice through-out the installation process that the corners of any glass that is frameless or semi frameless have a protective cover. Please try to leave these protective covers on any panels that have them until after you have moved panels into position.

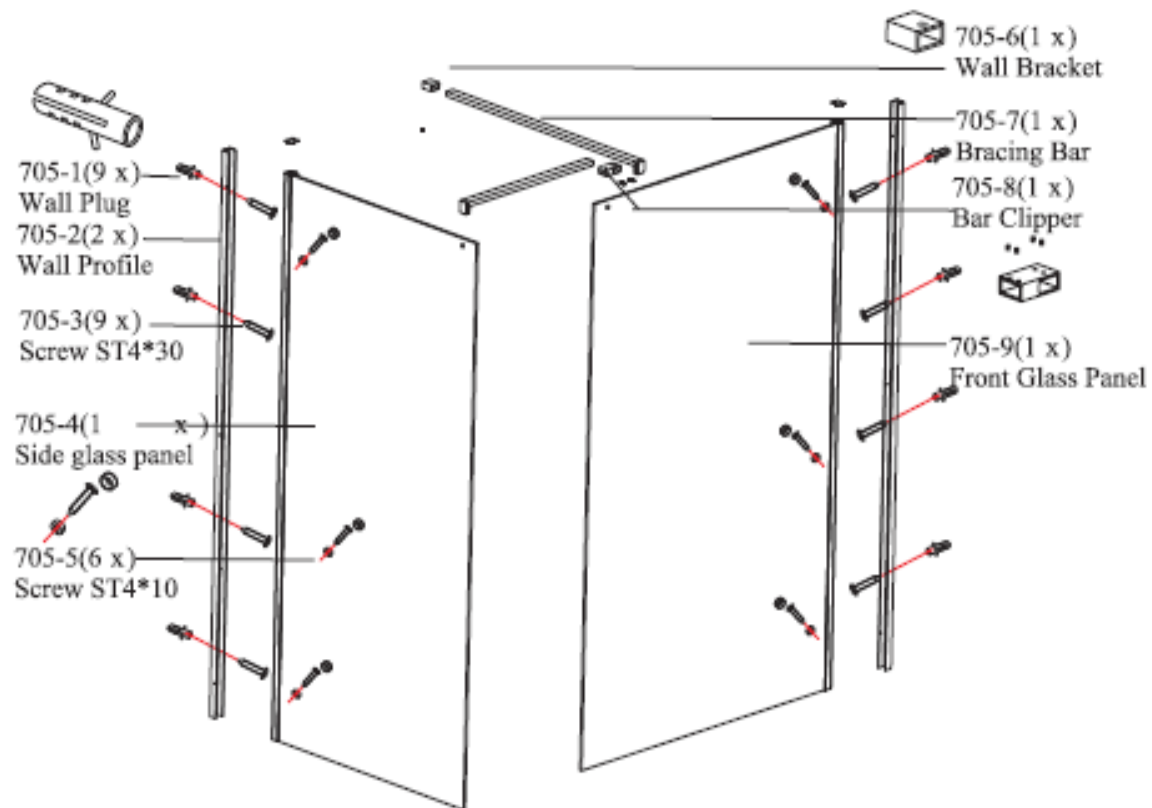
Throughout the entire installation process please ensure that the washers and grommets supplied are inserted correctly so that metal and glass do not make contact. Failure to do so will void warranty and may cause glass to break.

Flat packed DIY shower screens are heavy and may require two people to install.

Please refer to the supplied installation instructions to guide you through the installation process. Before you commence installation, refer to the Components List within the instructions along with the list of tools required to execute the installation.

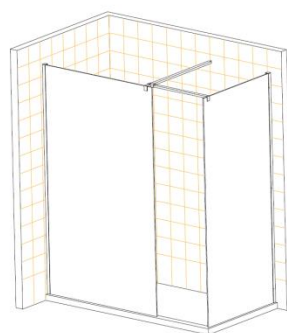
We highly recommend that you cover the shower base area with a protective cloth through-out the installation process to avoid damage to your shower base.

Components List

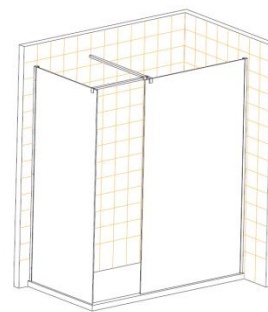


Tools Required

- Level
- Drill
- Mallet
- Silicone
- Silicone gun
- Pencil
- Screw driver
- Tape measure
- Chisel
- Stanley Knife
- Drill bit 3.2mm & 6mm



L/H



R/H

**Euro Frameless Panels can be
installed left hand or right hand**

Step 1 Level and Measure

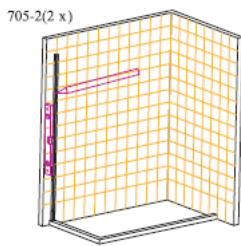
- Place a cloth down to protect your base or shower area.
- Ensure that installation occurs with a level base or shower area.
- Measure and Mark your Base or Shower area by referring to your minimum and Maximum Measurements, ensuring that your selected screen will fit within the desired area. The Minimum and maximum measurement for this shower is as follows,

NOTE: When using minimum measurement, make sure you allow for walls that are out of plumb. If your walls are leaning forward by 10mm, you must reduce your screen size area by this amount.

Min and max Measurements

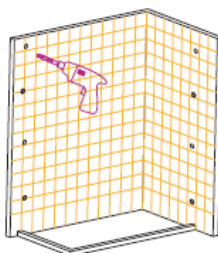
Front Panel Max 880mm - Min 900mm

Side Panel Max 860mm – Min 880mm

**Step 2 Mark, Drill and Fix wall Profile**

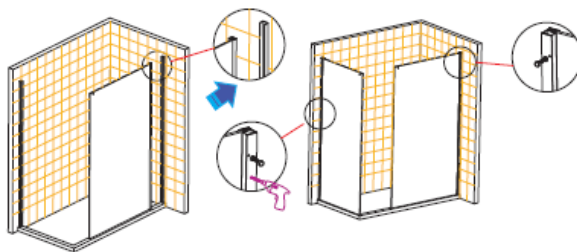
- With a level, position **Wall profile** against wall at desired measurement, within min and max measured area.
- With a pencil, mark the pre drilled holes inside of **Wall profile**. Remove wall profile and drill 6mm hole. (Use a masonry drill bit if drilling into tiles).
- Insert **Wall plugs** provided
- Using **Screws ST4*30** provided, fix **Wall Profile** to wall ensuring wall profile is level and fixed tightly.

Note: Wall profile must be Level and set inside of tile flange of base or within min and max measurements.



Step 3 Inserting Panels

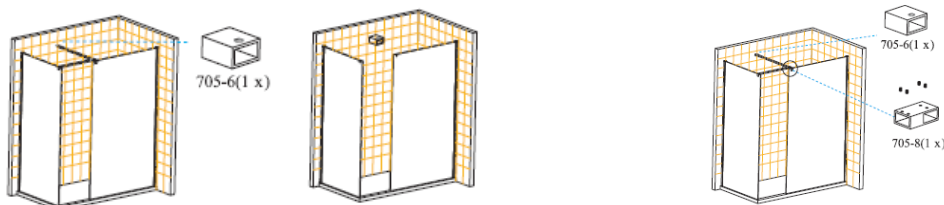
- Insert Part 4 Side glass panel in to part 2 Wall Profile.
- Insert Part 1 Front glass panel in to adjacent part 2 Wall Profile.
- Adjust and Move panels in or out to suit your shower base or shower area, ensuring all sides are level and straight.
- Insert **outer plastic spline** in between Part 2 wall profile and **Side glass Panel** on the external side of the screen.
- Repeat process. Insert **outer plastic spline** in between **wall profile** and **front glass Panel** on the external side of the screen.



Step 4 constructing brackets

- Attach the **glass clip** to **Long Bracing Bar** and tighten grub screws.
- Insert both **Plastic sleeves** in to **bar connecting Bracket**.
- Slide **Bar connecting Bracket** (Bar Clipper) on to **Long Bracing Bar**.
- Place **Wall Bracket** on to **long Bracing Bar**.
- Place **Long Bracing Bar** into position from front panel to rear wall, approx 70mm from front edge of front panel.
- Level and Mark around **wall bracket** with a pencil
- Remove **wall Bracket** and Drill hole (Use a masonry drill bit if drilling into tiles).
- Place **wall bracket** Back into Position and Fix to wall tightly using **st4*30 screw**.
- Attach the second **glass clip** to **Short Bracing Bar** and tighten grub screws.
- Place **Short bracing** bar to top of side panel 100mm from leading edge.
- Insert Short Bracing bar in to **Bar Connecting Bracket** (Bar Clipper) already attached to long bracing bar.
- Tighten all grub screws on all brackets.

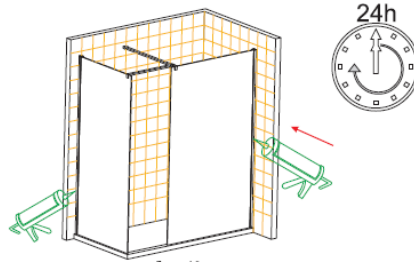
Note: Ensure plastic washers are correctly inserted avoiding metal and glass making contact. Failure to do so will void your warranty and may cause glass to break.



Step 5 Sealing

- a) Using recommended bathroom purpose silicone. Apply a fine bead of silicone vertically and horizontally on the outside perimeter of screen only, sealing your shower screen. This will prevent water from leaking out of screen and will allow water to effectively drain back towards outlet. Do not use shower for 24 hours allowing for silicone to set.

Do not use silicone internal of screen. Doing so will void warranty.



Rick McLean's Designer Shower Screens (Aust) Pty Ltd

Trading as Rick McLean's Designer Bathware

WARRANTY:

Any claim under this warranty must be made within 2 years of the date of purchase of the product.

To make a claim under the warranty, take the product with your proof of purchase to the store where you purchased the product or contact Rick McLean's Designer Bathware 03 1300 662 221.

Rick McLean's Designer Bathware plumbing products must be installed by a licensed/qualified plumber. Failure to do so will void warranty immediately. Certificate of Compliance from your plumber will be required for any warranty claim.

The warranty covers manufacturer defects in materials, workmanship and finish under normal use, it does not cover misuse, abuse, wear & tear or incomplete return of product. Glass is also excluded from warranty.

The warranty is given by

Rick McLean's Designer Showerscreens (Aust) P/L ABN 57 106 278 997

T/A Rick McLean's Designer Bathware

P. O. Box 232, Niddrie, VIC 3042

Ph; 1300 662 221, Fax 03 9331 6233, sales@rickmcleans.com.au

This warranty is provided in addition to other rights and remedies you have under law; Our goods come with guarantees which cannot be excluded under the Australian Consumer Law. You are entitled to replacement or refund for a major failure and to compensation for other reasonably foreseeable loss or damage. You are also entitled to have the goods repaired or replaced if the goods fail to be of acceptable quality and the failure does not amount to a major failure.

The warranty covers domestic use only and does not apply to commercial applications.